



Cherry Capital Communications

The time to embrace FIBER is now.

“How does CCCFIBER benefit me?”

⇒ **Saves you money**

⇒ Lower cost of TV content

⇒ Lower cost for phone service

⇒ **Fast, Reliable and Secure**

⇒ **Future proof your connection**

⇒ Increases property value

Cherry Capital Connection delivers a simplified solution. Benefits to you will be:

⇒ **More speed**

⇒ **Opportunities to save money**

⇒ **Increased consumer choice**

Next Generation of Networks will do to the internet what the internet did to telecommunications by putting:

The consumer is in the drivers seat

When selecting a level of service, keep in mind that with fiber 25meg is quite adequate. If you plan on watching live TV (sports for example), 50meg is a better choice. If your needs are multiple HD TVs streaming or you just enjoy really fast internet then 100meg may be the plan to meet your needs.

[Http://cccfiber.com](http://cccfiber.com)

Cherry Capital Communications **Neighborhood Fiber to the Home**

The modern human needs four things to survive, food, water, shelter and Internet access. Some Northern Michigan residents have a problem with the latter. You no doubt have been disappointed by the lack of internet options and competitive pricing available to you. The trends are clear; the future is fiber, and having multiple providers always benefits the consumer. After three years of negotiations, we have in place a plan to bring a second and possibly a third provider to your neighborhood. **“We need your help and participation.”**

If you would be so kind as to read our brochure and sign up for Fiber to the Home. To do so call the office at 231-264-9970 or access our signup portal at:

<http://cccfiber.com>

Working with local leaders we are launching a plan to bring fiber to your neighborhood and then to each of your homes. You and your neighbors deserve real choice and a cost-effective fiber solution. Fiber is a strong economic enabler and is essential to keeping our region healthy and strong for the next 50 years!!

Cherry Capital Communications

P.O. Box 866
97 Lake Street
Elk Rapids, MI 49629
Phone: 231-264-9970
Fax: 231-264-9945
E-mail:
ftp-sales@cherrycapitalcommunications.com

[Http://cccfiber.com](http://cccfiber.com)

Cherry Capital Communications

Presque Isle and Krakow Townships Neighborhoods Fiber to the Premise

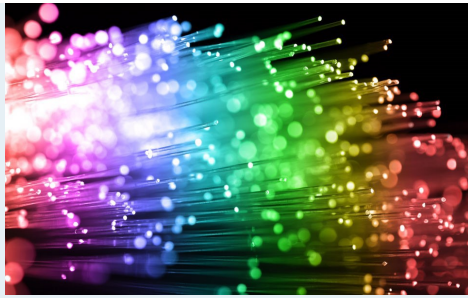
Fixed Point Wireless Also Available

Delivering the internet: High Speed Internet Access, Telephone Service and TV content (TV via third party subscription).



231-264-9970 | cherrycapitalcommunications.com

A Modern Telephone Company.



- ◆ Cost to connect is \$249. Installation fee is collected when permitting process starts. Fiber projects require up to 18 months to complete.
- ◆ New CCC customers may pay a CCF \$10/month fee for two years or a prepayment of \$200.
- ◆ Monthly fiber costs vary by connection speed (\$68/month for 25 meg, \$88/month for 50meg, etc.) . 36 month prepayments on monthly fiber subscription provides the greatest value and is not collected until your service is hooked up.
- ◆ Voice Over IP (VOIP), an acronym for using a telephone over the internet, is available for \$22/month. Existing landline numbers can be ported to VOIP. Purchasing a digital phone is required.
- ◆ The service also supports television from providers like Netflix, CBS All Access and even ATT's new direction with Direct TV. All of those services have their own costs. Call the office for more information regarding TV viewing. Available TV options are added regularly.

In-home wireless networks currently supported by CCC will still work with the fiber solution. New customers are encouraged to work with third parties (Radio Shack, The Geek Squad, or any number of qualified professional that assist the market) to establish in-home wireless networks. When current CCC customers switch to fiber they may opt to use those third parties as well. **Support local in home services. CCC needs 66% of the homes in a project area to agree to connect for the effort to be financially viable. Based on identifying demand project grouping will be defined.**

Fixed Point Wireless is part of the plan and will be available in support of Fiber to the Home. The goal is fiber to the entire neighborhood.

PI project updates: <https://presqueisleinternet.com/>

Fiber-Hood Presque Isle Twp. / Krakow Twp. Deployment Model

How do you benefit under the Fiber-Hood deployment model? (Savings and Choice)

- ◆ Installation fees of \$400 have been reduced to \$249. **Savings of \$151.**
- ◆ Prepay the 24 month Connection Commitment Fee (CCF) pay only \$200. **Save \$40.**

Prepay your monthly subscription and save even more:	Prepayment savings by plan and months of prepayment			
	Plan 1 Savings	Plan 2 Savings	Plan 3 Savings	Plan 4 Savings
◆ 12 Month Prepayment: Save 5%	\$40.80	\$52.80	\$64.80	\$76.80
◆ 24 Month Prepayment: Save 6%	\$97.92	\$126.72	\$155.52	\$184.32
◆ 36 Month Prepayment: Save 7%	\$171.36	\$221.76	\$272.16	\$322.56
◆ 48 Month Prepayment: Save 8%	\$261.12	\$337.92	\$414.72	\$491.52
◆ 60 Month Prepayment: Save 10%	\$408.00	\$528.00	\$648.00	\$768.00

Best Value

Attention: Fixed Point Wireless customers that paid a \$400 install within 12 months of "fiber signup" your Fiber install only \$149
Other ways to save & our CCC team are available to assist you in determining the best solution:

- ◆ Prepay for 36 months or greater and CCC will waive the **CCF** saving you another **\$200-\$240**
- ◆ Switch your phone line to VoIP. Monthly savings can be up to **\$30—phone service is \$22 p/m**
- ◆ Switch from cable and satellite to IPTV. Monthly savings can be up to **\$35.**

To get your neighborhood moved to the top of the list; call the office today!

Call 231-264-9970 or email: fttp-sales@cherrycapitalconnection.com

Electronic hard copy reservation forms are available upon request

Delivering the internet: High Speed Internet Access, Telephone Service and TV content (TV via third party subscription).

Fiber to the Premise subscription plan offerings

Plans	Select	Service Level	Download (Up to)	Upload (Up to)	Comment - Discounted pricing requires a 24-month initial commitment
Plan 1	\$68 + CCF	Good	25M	25M	Requires a 24-month connection commitment fee & up to 200 feet drop cable included
Plan 2	\$88 + CCF	Better	50M	50M	Requires a 24-month connection commitment fee & up to 300 feet drop cable included
Plan 3	\$108 CCF waived	Great	75M	75M	Connection commitment fee waived & up to 400 feet of drop cable included
Plan 4	\$128 CCF waived	Best	100M	100M	Connection commitment fee waived & up to 500 feet of drop cable included

Sign up or take the survey <http://ccfiber.com>